

PRODUCT WARNING ⚠️

READ AND SAVE ALL INSTRUCTIONS BEFORE INSTALLING AND USING THIS PRODUCT. TO REDUCE THE RISK OF INJURY TO PERSONS, OBSERVE THE FOLLOWING:

1. This product is not intended for use by persons (including children) with reduced physical, sensory, or mental capabilities, or a lack of experience with and knowledge, unless they have been given supervision or instruction concerning the use of the appliance by a person responsible for their safety.
2. Safety precautions should be exercised during the installation, operation, and maintenance of this product. If you are unfamiliar or have doubts about performing this product's installation, seek the services of a qualified, trained, and licensed professional.
3. Do not insert or allow fingers or foreign objects to enter any valves or small openings, as it may cause injury to persons.

1

PRODUCT CONTENTS



AUTO-FILL VALVE
(x4)



WATER TUBE
(x1)



VALVE CONNECTOR
(x4)



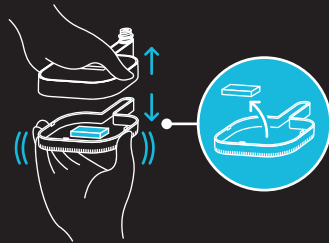
TUBE SPLITTER
(x4)

2

INSTALLATION BEFORE ASSEMBLY

REMOVE PROTECTIVE PACKAGING
Press the sides of the auto-fill valve's base to remove the top shell.

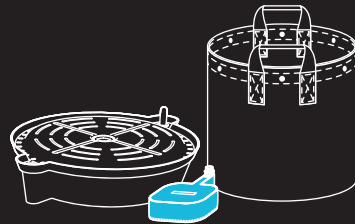
Remove the foam insert within the valve and reassemble before use.



ADDITIONAL PRODUCTS

The Auto-Fill Valve is designed to pair with the Self-Watering Fabric Pot Base. Refer to the manual of that product for more specified installation instructions.

This product also requires a water storage tank or water source that can fit 1/4 in. 3/8 OD tubing. Ensure those items are present before proceeding.

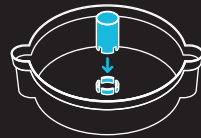


3

INSTALLATION SELF-WATERING BASE*

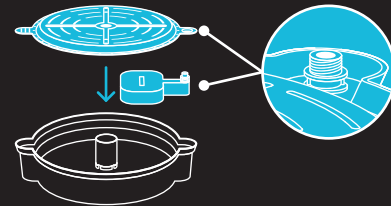
STEP 1
Place the support column in the center of the water basin.

Make sure the support column's feet fit into the water basin's center divots.



STEP 2
Place the auto-fill valve in the water basin.

Set the drain plate over the basin. Ensure the water valve's nozzle goes through the designated slot at the side of the drain plate.



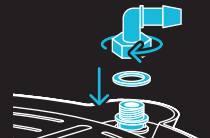
*Self-Watering Base sold separately.

4

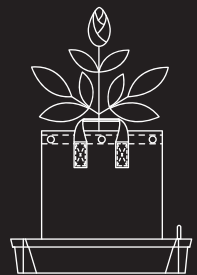
INSTALLATION SELF-WATERING BASE

STEP 3
Screw the valve connector and washer onto the auto-fill valve's nozzle.

Do not overtighten.



STEP 4
Prepare your self-watering base to fit your needs. Refer to the self-watering base manual for further instructions.



5

INSTALLATION ASSEMBLING THE CHAIN

PREPARATION
Cut the included water tube at your desired lengths.

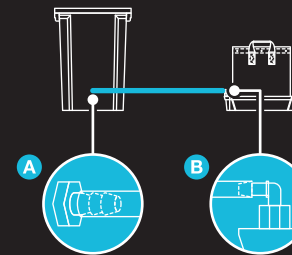
See chart to determine how many cut pieces of the water tube you need, determined by how many self-watering bases you will use.

NUMBER OF POTS	NUMBER OF TUBES
1	1
2	3
3	5
4	7

SINGLE BASE

Connect the tank's* waterspout to the valve connector's nozzle using a piece of the water tube.

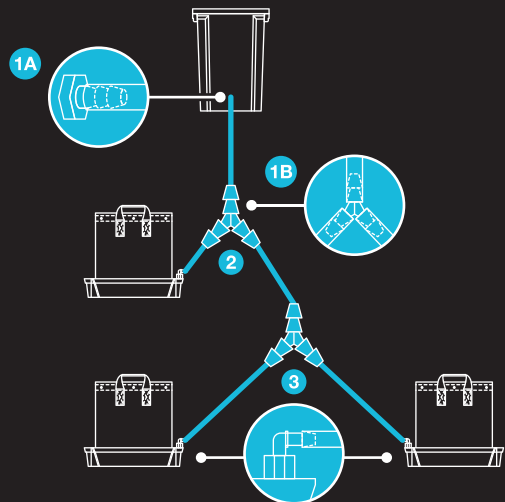
Ensure that your water tank can output to 1/4 in. 3/8 OD tubing.



*Water tank sold separately.

6

INSTALLATION ASSEMBLING THE CHAIN: MULTIPLE BASES



7

INSTALLATION ASSEMBLING THE CHAIN: MULTIPLE BASES

STEP 1
Connect the tank's waterspout to a tube splitter using a piece of the water tube.

Ensure that your water tank can output to 1/4 in. 3/8 OD tubing.

STEP 2
Connect the tube splitter to the valve connector's nozzle using a piece of the water tube. Connect the tube splitter to an additional one using a piece of the water tube.

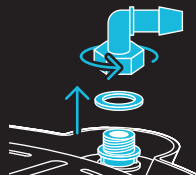
STEP 3
Repeat step 2 as needed. Connect the final piece of the water tube to the valve connector's nozzle, instead of an additional tube splitter, to end the chain.

8

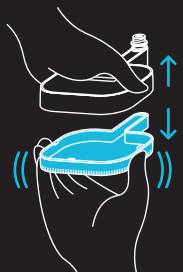
INSTALLATION MAINTENANCE

STEP 1
Unscrew the valve connector and washer from the auto-fill valve's nozzle on the self-watering base.

Remove the drain plate and auto-fill valve from the water basin.



STEP 2
Press the sides of the auto-fill valve's base to remove the top shell.

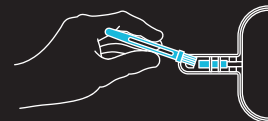


9

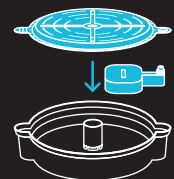
INSTALLATION MAINTENANCE

STEP 3
Remove any debris from the valve stopper using a small brush or cloth.

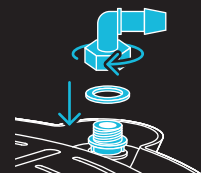
Clean the auto-fill valve's base and top shell using a damp cloth.



STEP 4
Reassemble the auto-fill valve and return it to the water basin.



STEP 5
Set the drain plate and valve connector back onto the self-watering base.



10

MORE INFORMATION

WARRANTY

Our warranty program is our commitment to you, the original customer, that products sold by AC Infinity Inc. will be free from defects for TWO YEARS from the date of purchase. If you have any issues with this product, contact us and we'll happily resolve your problem or issue a full refund!



WEBSITE | www.acinfinity.com
EMAIL | support@acinfinity.com
PHONE | 626-923-6399
HOURS | 9 am to 5 pm PST
ADDRESS | 21880 BAKER PARKWAY
CITY OF INDUSTRY, CA 91789

DEALERS
EMAIL | dealers@acinfinity.com
PHONE | 626-838-4656
HOURS | 9 am to 5 pm PST

MANUAL CODE SPV2507X1

COPYRIGHT © 2025 AC INFINITY INC. ALL RIGHTS RESERVED
No part of the materials including graphics or logos available in this booklet may be copied, photocopied, reproduced, translated or reduced to any electronic medium or machine-readable form, in whole or in part, without specific permission from AC Infinity Inc.

11

AUTO-FILL VALVE QUICK START GUIDE

AC INFINITY